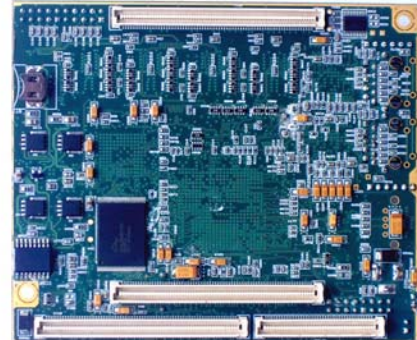


Topside View



Underside View

Standard Development Module:

The Python8541/8555 module provides a proven functional unit for inclusion in OEM products. By embedding the Python8541/8555, the parent system can utilise the full functionality of the module. Supplied with on-board operating system (eCos and Linux options), IP stack and GNU development tools, the module supports rapid product development, or alternatively the cost-effective module provides an efficient and commercially attractive enhancement to existing products. The provision of the MPC8541/8555 processor, 2 on-board gigabit Ethernet ports and USB (Python8555 only), lead to a powerful embedded module to meet the most demanding of communication requirements.

The optional motherboard provides a powerful integrated Linux development platform. Available functionality includes 2x USB 2.0 host ports, video port for connection to monitor, keyboard/mouse ports, 2x SATA hard disk ports, 1x PATA hard disk port and 2x PCI ports (each for a separate bus). The motherboard runs Fedora Core, enabling native PPC development. Pricing is dependant on volumes.

Please contact A&M for quotation. For more information on Analogue & Micro's products and design services, visit the web site or use the contact details listed.

Custom Embedded Module:

For production volumes, the Python8541 card can be fully customised to meet application requirements. A range of MPC8541 based cards are available, or a new version can be created as required. Module and motherboard features can be integrated into single module solutions, with OS drivers developed, providing a complete system solution. Each customised derivative is a COTS card, with the same warranty and support status as the existing standard card range.

Contact A&M to discuss the customisation service.

Module Specification

| | |
|---------------------------------|---|
| DDR RAM | 128/256MB, 64-bit wide |
| Flash | 32MB, 16-bit wide |
| Processor | Nominally MPC8541, core speed 667MHz, available up to 1GHz. Option for MPC8555 |
| Ethernet | 2x 10/100/1000 Ethernet |
| USB | 1x USB 1.1 port, host or device (Python8555 only) |
| Serial | 2x RS232 headers |
| PCI | 2x 32-bit PCI ports (separate buses) |
| Expansion | 140 pin port configurable via on-board Lattice FPGA 80 pin CPM port for communication applications |
| OS | Linux (2.6.x) and eCos supplied |
| Dimensions | 120mm x 100mm |
| Temperature | 0°C/70°C (-40°C/+85°C available) |
| Power Supply | Single 3V3 (DC-port, or via expansion port) |
| Current | Typically 4A @ 3V3 |
| Motherboard Features (optional) | 2x PCI slots, video/keyboard/mouse ports, 2xUSB 2.0 host ports, 2x SATA hard drive ports, 1x IDE hard drive port, Fedora Core |

Analogue & Micro Ltd
Lakeside House
Lakeside
Cwmbran
UK, NP44 3XS

Tel: +44 (0) 1633 863282
Web: www.analogue-micro.com