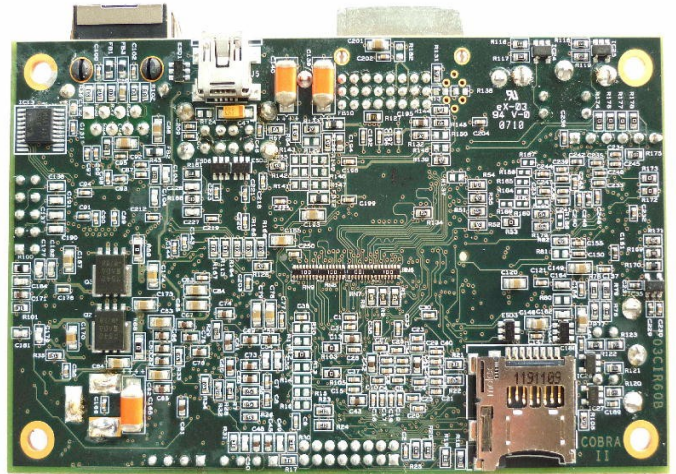


Topside View



Underside View

Standard Module

The Cobra3530 module provides a proven functional unit for inclusion in OEM products. By embedding the Cobra3530, the parent system can utilise the full functionality of the module. Supplied with on-board Linux operating system, the module supports rapid product development, or alternatively the cost effective module provides an efficient and commercially attractive product solution. The on-board feature set leads to a powerful embedded module to meet demanding applications.

Custom Embedded Module

For production volumes, the Cobra3530 card can be fully customised to meet application requirements. Products can offer higher or lower levels of feature integration, with OS drivers developed to provide a complete system solution. Each customised derivative is a COTS card, with the same warranty and support as the existing standard range.

Contact A&M to discuss the customisation service.

Module Specification

- Based on TI OMAP3530 processor
- Dimensions 105mm x 70mm including connectors
- LCD Expansion port (24 bit) with Touchscreen Control
- Analogue Camera Input (S-Video or Composite)
- Digital CCD Camera Input (up to 12 bit)
- TV Out
- DVI Out
- Mono Audio In, Stereo Audio Out (Class D)
- 2Gb/1Gb Flash/DDR PoP memory
- 4GB eMMC Drive
- Micro-SD Card
- 1x 10/100 Ethernet port
- 3x USB2.0 ports (1x OTG, 2x USB host)
- On-board GPS
- 1x serial port (option for 2nd port)
- 2x 10-bit A/D channels
- Linux OS

Analogue & Micro Ltd
Lakeside House
Lakeside
Cwmbran
UK, NP44 3XS

Tel. +44 (0) 1633 863282
Web: www.analogue-micro.com