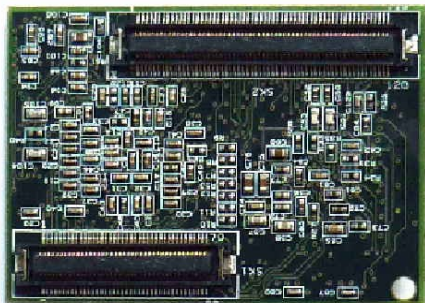
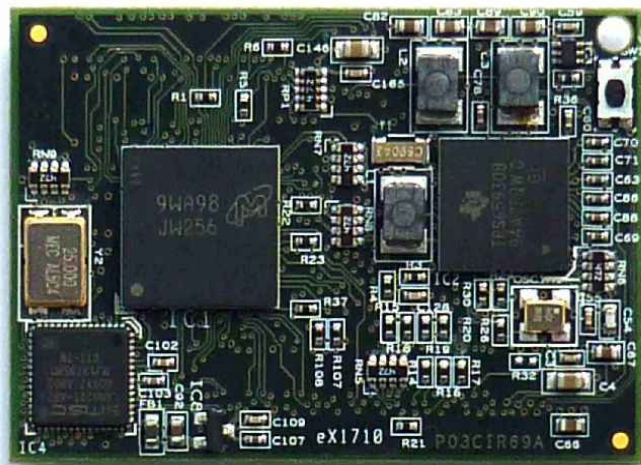


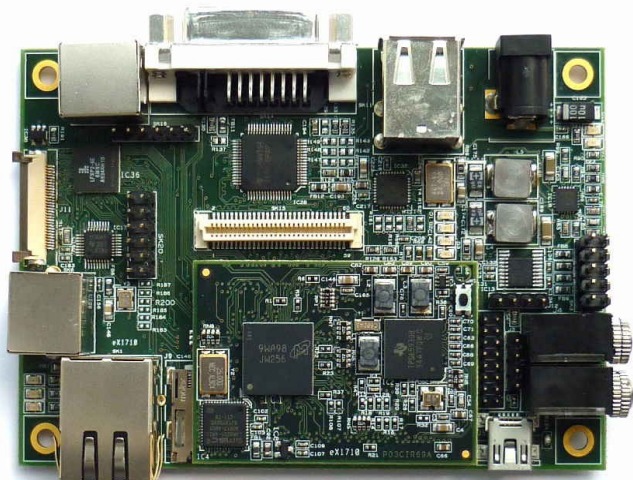
Cobra3530-M OMAP3530 Module



Bottom Side



Top Side



Cobra3530-Mini
 Module Mounted
 on Base Board

Standard Module

The Cobra3530-M module provides a proven functional unit for inclusion in OEM products. By embedding the module, the parent system can utilise its full functionality. Supplied with on-board Linux operating system, the module supports rapid product development when coupled with the Base Board. Alternatively the cost effective module provides an efficient and commercially attractive plug-in processing platform for an application specific system. The on-board feature set leads to a powerful embedded module to meet demanding applications.

Custom Embedded Module

For production volumes, the module can be fully customised to meet application requirements. Products can offer higher or lower levels of feature integration, with OS drivers developed to provide a complete system solution. Each customised derivative is a COTS card, with the same warranty and support as the existing standard range.

Contact A&M to discuss the customisation service.

Module Specification

- Based on TI OMAP3530 processor
- Dimensions 50mm x 35mm
- TI TPS65930 companion device fitted
- Linux OS
- 2Gb/1Gb Flash/DDR PoP memory
- On-board 10/100BaseT Ethernet MAC/Phy
- Expansion Connectors providing the following ports:

24-bit LCD interface; 10-bit camera interface; TV-out; SPI (with 4 chip selects); 5x GPIO; 2x PC ports; JTAG; 3x UARTs; Stereo audio out; Mono audio in; USB OTG; McBSP3 and McBSP4; Ultra low Pinb interface (for USB phy); 3V SD-card interface

Optional Base Board Providing

- DVI Out
- Analogue Video In and Out (Composite and S-Video)
- Digital Video In
- 5V DC Input
- Mono Audio In, Stereo Audio Out (Class D)
- 4GB eMMC Drive
- Micro-SD Card
- 1x 10/100 Ethernet port
- 3x USB2.0 ports (1x OTG, 2x USB host)
- 1x serial port